

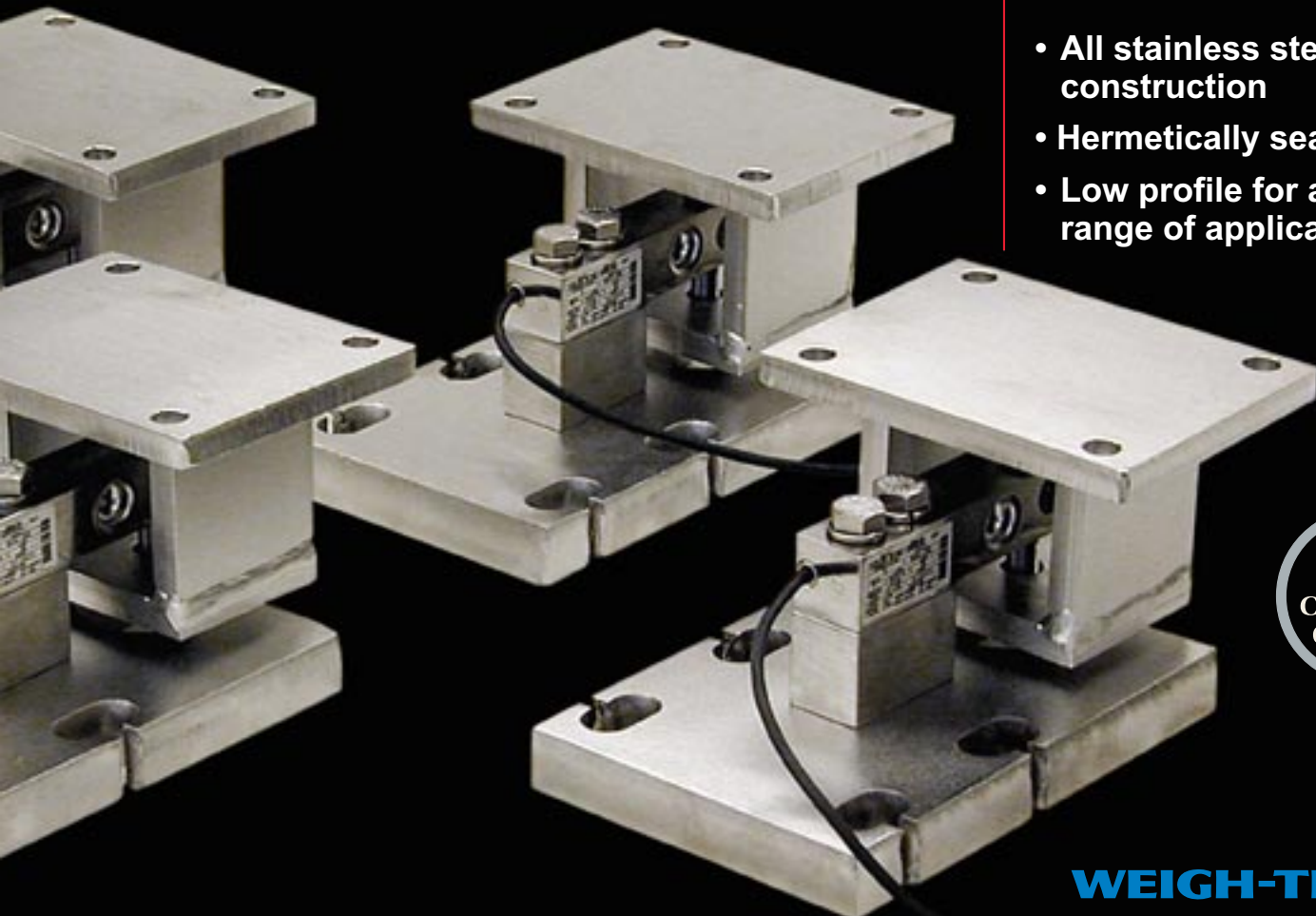


Model SBS

*For Accurate Batch Weighing
under Extreme Conditions*

Choose SBS weight sensors to satisfy the highest standards of corrosion resistance and sanitation for food, chemical and industrial processing.

- **All stainless steel construction**
- **Hermetically sealed**
- **Low profile for a greater range of applications**



Food
&
Chemical
Quality



SBS shear beam weight sensors are built for long service life in harsh environments. The stainless steel, hermetically sealed assemblies offer superior corrosion resistance and structural integrity. They provide high-accuracy weighing for applications including: food ingredient mixing; chemical blending; micro-batching; meat and poultry processing.

SBS assemblies are used to support uniformly distributed loads such as tanks, silos and hoppers. Loads are suspended on high-strength bolts instead of chain links or swage cables. This design reduces overall height, allowing SBS assemblies to be used where others cannot. All parts of the assembly are also fully accessible for thorough cleaning.

SBS features a self-aligning platform, simple bolt-on installation and built-in height adjustment which eliminates the need for most shimming. Assemblies are available individually or in sets of three or four.

Specifications

Construction: 304 stainless steel

Capacities: 1,000 lb, 2,500 lb, 4,000 lb, 5,000 lb, 10,000 lb

Recommended excitation voltage: 10V AC or DC

Maximum excitation voltage: 10 VDC or 15 VAC rms

Input resistance: 387 \pm 20 Ohms

Output resistance: 350 \pm 3 Ohms

Output at rated capacity: 3.0mV/V \pm 3%

Combined error: \pm 0.03% of applied load

Temperature range (operating): 14°F to 104°F (-10°C to +40°C)

Temperature range (compensated): 14°F to 104°F (-10°C to +40°C)

Safe overloading rating: 150% of rated capacity

Maximum overload rating: 300% of rated capacity

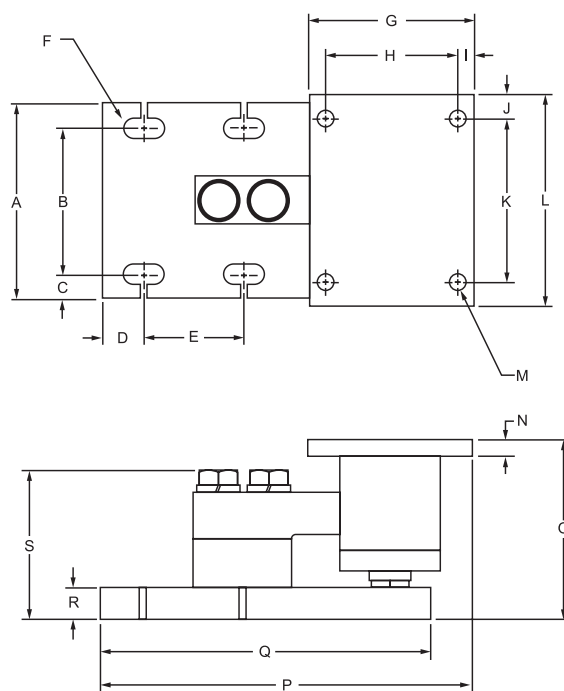
Deflection at rated capacity: approx. 0.015 inches

Insulation impedance: 5000 Mega Ohms minimum

Cable: 20 ft, polyurethane cable jacket

Ingress protection: IP 67

Approvals: NTEP #91-030 Class III 5,000 divisions



Dimensions (inches)		
	1-5k	10k
A	6	6
B	4.5	4.5
C	0.75	0.75
D	1.25	1.25
E	3.0	3.0
F	1.25 x .62 slot	1.25 x .62 slot
G	5.0	5.0
H	4.0	4.0
I	0.5	0.5
J	0.75	0.75
K	5.0	5.0
L	6.5	6.5
M	0.53	0.53
N	0.5	0.5
O	5.25	5.5
P	10.25	11.25
Q	8.75	10.0
R	1.0	1.0
S	4.15	4.56



Weigh-Tronix

1000 Armstrong Dr.

Fairmont, MN 56031 USA

Telephone: 507-238-4461

Facsimile: 507-238-4195

e-mail: industrial@weigh-tronix.com

www.wtxweb.com

Weigh-Tronix Canada, ULC

217 Brunswick Blvd.

Pointe Claire, QC H9R 4R7 Canada

Telephone: 514-695-0380

Facsimile: 514-695-6820

WEIGH-TRONIX

Weighing Products & Systems