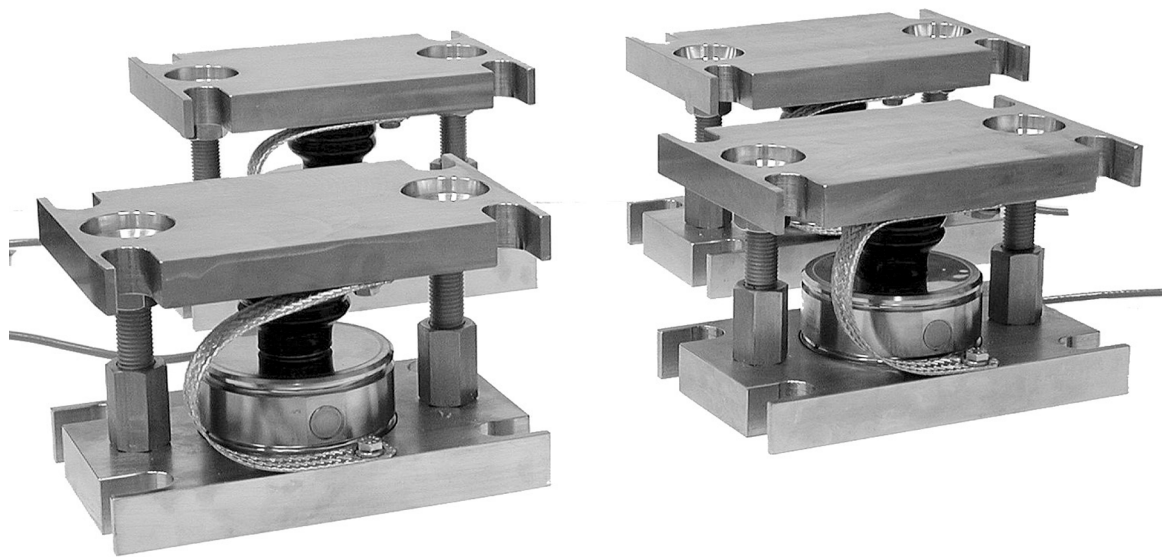


WEIGH-TRONIX

220 Tank Mounts

*Heavy duty, high accuracy
compression load cells*



- NTEP #00-067 Class IIIL 10,000 Divisions
- Individual cell capacities:
5, 10, 20, and 30 metric tons
- All stainless steel construction
- Hermetically sealed load cell
- Tolerant of angular misalignment
- Low profile
- Integral lift-off protection
- Jacking capability included



220 Tank Mounts

The 220 Tank Mount is available in kits of three or four cells. It is specifically designed for the support of tanks, silos, and hoppers. This makes it ideal for indoor or outdoor process control applications when high accuracy weighing is required.

The 220 Tank Mount is designed to support a uniformly distributed load and is capable of tilting through a maximum of $\pm 3^\circ$ from vertical. Its compact assembly offers simple installation. The heavy gauge, stainless steel construction provides a rigid and robust load cell for high accuracy and long life in harsh industrial environments.

Specifications

Construction: Stainless steel

Capacities: 11,000 lb, 22,000 lb, 44,000 lb, 66,000 lb
(5, 10, 20 and 30 metric tons) **per load cell**

Recommended excitation voltage: 10V AC or DC

Maximum excitation voltage: 15V AC or DC

Input resistance: 1065 Ohms ± 50

Output resistance: 1000 Ohms nominal

Output at rated capacity:

2.0mV/V $\pm 0.1\%$, depending on capacity

Total Error: $\pm 0.050\%$ of Applied Load

The 220 Tank Mount incorporates lift off protection and allows for thermal expansion of the weighing vessel.

A built-in jacking capability allows the 220 Tank Mount to be installed in the jacked-up position without the load cell. This makes installation much easier and prevents the possibility of damage to the load cell. Using the built-in jack the load cell can be replaced by raising the unit only $\frac{1}{4}$ ".

The internal roller assembly can be positioned to accommodate thermal expansion of the tank in either direction.

Temperature range (operating):

-22°F to 158°F (-30°C to +70°C)

Temperature range (compensated):

14°F to 104°F (-10°C to +40°C)

Safe overloading rating: 150% of rated capacity

Maximum overload rating: 300% of rated capacity

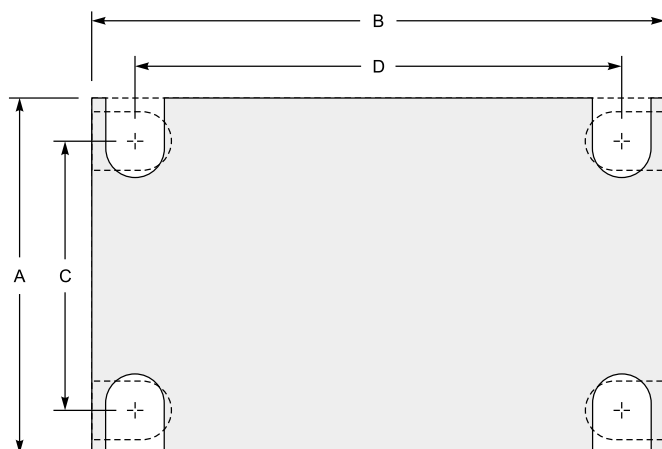
Deflection at rated capacity: <0.5mm

Insulation impedance: >2000 Mega Ohms

Approvals: NTEP #00-067

Mounting Hole Positions

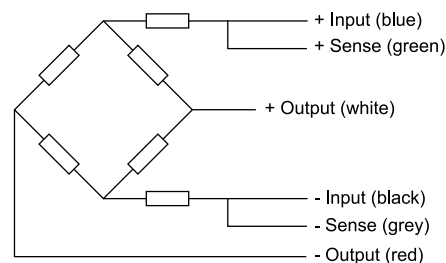
Capacity	A	B	C	D
5 & 10t	5"	8"	3.5"	6.75"
20 & 30t	6"	9.625"	4.5"	8.25"



Weigh Bar® is a registered trademark of Weigh-Tronix Inc.

06/13 220TANK.P65 PN 09747-0017 Printed in USA

Wiring Schematic Diagram



Weigh-Tronix

1000 Armstrong Dr.

Fairmont, MN 56031 USA

Telephone: 507-238-4461

Facsimile: 507-238-4195

e-mail: industrial@weigh-tronix.com

www.weigh-tronix.com



Weigh-Tronix Canada, ULC

217 Brunswick Blvd.

Pointe Claire, QC H9R 4R7 Canada

Telephone: 514-695-0380

Facsimile: 514-695-6820

WEIGH-TRONIX

Weighing Products & Systems